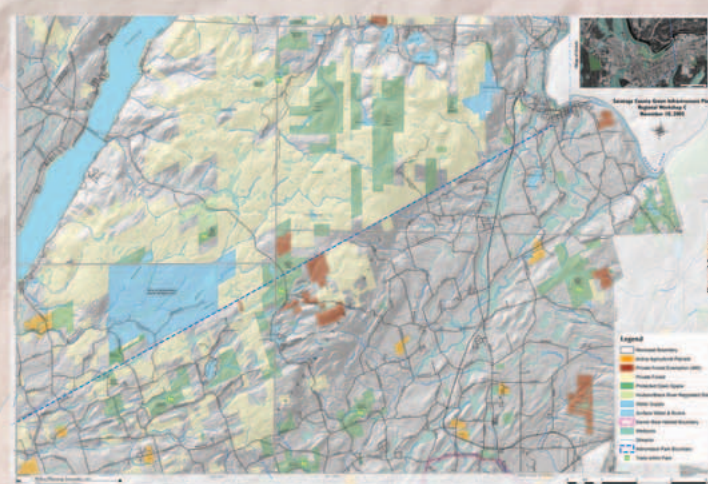


The Green Infrastructure Network for Saratoga County - Illustrating a Vision

Behan Planning and Design, in partnership with American Farmland Trust and Dodson Associates, assisted Saratoga County in developing the first county-wide comprehensive green infrastructure plan in the state. This regional plan identifies the county's most important resources and details a strategy for their conservation. The plan was created with extensive input from county residents and officials and was adopted by the board of supervisors in November 2006.

The plan builds upon local conservation goals and efforts to create regional priorities. The plan advances the concept of "borderless communities" in Saratoga County. Green infrastructure resources do not always follow local municipal borders. In fact, the resources and economics of the region are more often unifying and cohesive, rather than divisive and fragmented. The plan helps to identify these regional resources and provides a framework for communities to work together, with county leadership, to achieve a common goal.

A key component of the Green Infrastructure plan is the Green Infrastructure Network map. The map illustrates the county's green infrastructure network, which includes a system of unfragmented wildlife "hubs," linked together by conservation greenways; core working landscapes of agriculture and forestry; opportunities for people to connect to the land, through trails, parks and waterfront access; and the county's cultural heritage areas.



Existing Conditions maps were provided as a base for public input to refine our understanding of the county and serve as the initial building blocks for a county-wide vision.

Throughout a series of workshops held across the county residents were able to put pen to paper and highlight areas of importance. Ultimately a set of interconnected concepts took shape and led to the creation of the four synthesis maps shown below.



Following another series of public workshops the four synthesis maps evolved into a vision for the county that highlights the most important green infrastructure resources that Saratoga County has to offer.

The Green Infrastructure Network map provides a visual, easy to understand summary of the county's plan and allows residents and municipal officials to readily see how their projects relate to the vision and goals of Saratoga County as a whole.

A Green Infrastructure Network for Saratoga County

Legend

- Natural Systems Hubs
- Farmland Core Areas
- Green Infrastructure Gateways
- Heritage Hubs
- Greenway Corridors & Trails

Legend

- Municipal Boundaries
- Public Lands
- Wilton Wildlife Preserve & Park
- ADK Blue Line

Map prepared by: Behan Planning Associates, LLC
 Dodson Associates, Ltd.
 American Farmland Trust

Data Sources: Saratoga County Planning Department, NYSDEC, NYSGIS Clearinghouse, Saratoga PLAN, The Open Space Institute, The Nature Conservancy

- The county's green infrastructure network includes a system of unfragmented wildlife "hubs," linked together by conservation greenways. It includes retention and conservation of core working landscapes of agriculture and forestry. It includes opportunities for people to connect to the land, through trails, parks and waterfront access. It includes celebration of the county's cultural heritage and the integration of green infrastructure with tourism and economic development initiatives. And, lastly, it includes the balancing of settlement and "gray infrastructure" to sustain resources.
- Natural Systems Hubs**
 Large areas of unfragmented forest, interconnected wetlands, and other habitat should be conserved and balanced with sustainable uses that maintain the resource value.
- Southern Adirondacks
 - Palmertown Range and Adirondack Foothills
 - Moreau Lake State Park
 - Karner Blue Butterfly Recovery Units
 - Wilton Wildlife Preserve and Park
 - Saratoga Spa State Park
 - Malta Ecological Park
 - Petrified Sea Gardens & Lester Park
 - Bear Swamp
 - Saratoga National Historical Park
 - Vischer Ferry Nature & Historic Preserve
 - Greenway Convergence (Ballston/Malta)
 - Shenantaha Creek Park
 - Dwaaskill Natural Area
 - Saratoga Lake/Drummond Creek Wetlands
 - Galway/Charlton Wetlands
 - West Milton Forest Hub
- Farmland Core Areas**
 Large, unfragmented blocks of working farms and farmlands should be retained and conserved.
- Hudson River Valley
 - Western County
 - Clifton Park
 - Halfmoon
- Green Infrastructure Gateways**
 Major cultural and historical destinations and entrances to the county's green infrastructure should be celebrated and integrated with economic development and tourism efforts.
- Hudson-Mohawk Gateway (Village of Waterford)
 - Adirondack Gateway (Village of Corinth)
 - "Old Saratoga" Gateway (Villages of Schuylerville & Victory)
 - Saratoga Springs Gateway (City of Saratoga Springs)
 - Horse Country Gateway (location TBD)
 - Western County Gateway (Galway/Charlton)
- Greenway Corridors and Trails**
 Connections between natural systems hubs for both wildlife and people should be created with sensitivity to the natural and cultural setting.
- Erie Canal and Upper Hudson River Greenway (Mohawk River, Champlain Canal, Hudson River)
 - Kayaderosseras Creek-Fish Creek Greenway
 - Mid-County Trail System (Zim Smith Trail, Ballston Veterans Memorial Trail, Palmertown Range Trail)
 - Alplaus Kill Greenway
 - "Loop The Lake" Sacandaga Lake Trail
 - The Long Path
 - Mid-County Equestrian Trail
 - Luther Forest Loop Trail
- Heritage Hubs**
 Concentrated areas of significant historic resources should be preserved and integrated into heritage tourism network that celebrates the rich history of the county.
- Adirondack Wilderness Hub (Town of Edinburg)
 - South Glens Falls Hub
 - Bacon Hill Hub (Town of Northumberland)
 - Saratoga National Historic Park Hub (Town of Saratoga)
 - Mechanicville Hub
 - Vischer Ferry Hub (Town of Clifton Park)
 - Ballston Spa Hub
 - Hadley Hamlet Hub
 - Round Lake Hub
- This map depicts county-wide green infrastructure priorities which have been developed through a series of public workshops and meetings, as well as through consultation with local and regional experts and interested parties. This map is not an exhaustive inventory of all county priorities. The concepts presented on this map are intended for planning purposes only and are meant to be interpreted at the scale of Saratoga County.

Green Infrastructure Plan for Saratoga County
 Adopted November 21, 2006

The Saratoga County Green Infrastructure Plan was adopted by the County Board of Supervisors in November 2006. Implementation of several of the goals outlined in the plan has already begun.

Funding for the county's farmland and open space grant program was increased from \$500,000 to \$750,000.

Nearly 1,000 acres has been preserved as a result of county funding.

The county has leveraged almost \$3 million in NYSAM funding to preserve 545 acres of farmland.

The county preserved a 58 acre farm without any state assistance.



TOWN OF CHARLTON FARMLAND PROTECTION PLAN

SEPTEMBER 2009

Two towns in the county have received funding from NYSAM for municipal farmland protection plans and the county is in the process of updating its farmland protection plan.

The Zim Smith Mid-County trail has received federal funding in addition to county funding for Phase II construction.



There has been an increase in cooperative educational seminars by government and local land trusts to educate farmers, local officials and landowners about farmland protection.